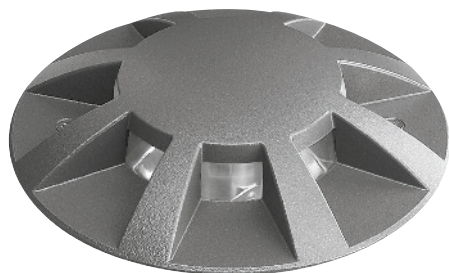


CRICKET 168+ RAD

design by SILVIA PAOLA PENNACCHIO



● AN-96 / Anthracite gray / Textured

Range of Class II in-ground fixtures, comprising:

- Reinforced, heat stabilized technopolymer housing
- Pressed toughened glass diffuser
- High-transparency polycarbonate lenses for best light transmission
- Anti-ageing silicone gasket with high resiliency
- Die-cast aluminium cover painted after chemical preparation of the surface
- Mains connection device WATER STOP
- The LED versions use high power LEDs mounted on an aluminium heat sink
- Stainless steel locking screws
- Technopolymer recessed rough-in kit
- Rough-in kit fixing system designed for a safe installation even when it is not perfectly flush with the floor
- Floor mounted luminaires are subject to harsh conditions during use. For proper

function and safety, they must be correctly installed by qualified personnel and according to the installation instructions

- Do not install luminaires in sunken areas
- Effective water drainage must be prepared with a gravel bed of at least 30 cm
- If the luminaire is accessible to the public, ensure that the temperature of the glass, specified on the side of every version, is compatible with the pertinent local installation standards
- 360° horizontal adjustability of the luminaire
- On request, it is possible to have versions with a precision-cast stainless steel cover.



CRICKET 168+ RAD
LED 110°
110°

CRICKET 168+ RAD
LED 210°
210°

CRICKET 168+ RAD
LED 360°
360°

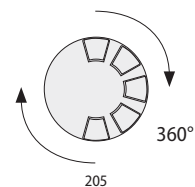
Precision-cast stainless steel trim (on request)



CRICKET 168+ RAD LED 110

IK09 16J xx7

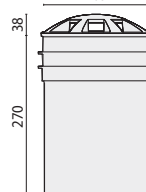
LAMPHOLDER	WATTAGE	CLASS	☀️	CRI	KELVIN	COS Φ ≥ 0,9	OPTIC	OPTIC BEAM	LIGHTSOURCE LUMEN OUTPUT	LUMINAIRE LUMEN OUTPUT	L	B	LIFETIME	COLOUR/ RAL	PART NUMBER
Power LED 220-240 V 50/60 Hz															
LED	7,5 W	II		65	6000	R		110°+30°	400 lm	163 lm	80	10	50000 h	●	06016096
LED	7,5 W	II		85	3000	R		110°+30°	360 lm	147 lm	80	10	50000 h	●	06021496



CRICKET 168+ RAD LED 210

IK09 16J xx7

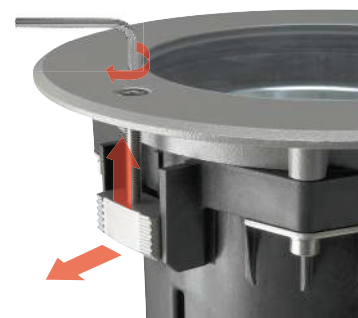
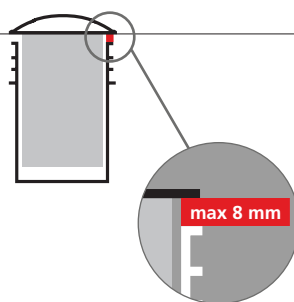
LAMPHOLDER	WATTAGE	CLASS	☀️	CRI	KELVIN	COS Φ ≥ 0,9	OPTIC	OPTIC BEAM	LIGHTSOURCE LUMEN OUTPUT	LUMINAIRE LUMEN OUTPUT	L	B	LIFETIME	COLOUR/ RAL	PART NUMBER
Power LED 220-240 V 50/60 Hz															
LED	8,5 W	II		70	6000	R		210°	500 lm	212 lm	80	10	50000 h	●	06015896
LED	8,5 W	II		85	3000	R		210°	450 lm	191 lm	80	10	50000 h	●	06021396



CRICKET 168+ RAD LED 360

IK09 16J xx7

LAMPHOLDER	WATTAGE	CLASS	☀️	CRI	KELVIN	COS Φ ≥ 0,9	OPTIC	OPTIC BEAM	LIGHTSOURCE LUMEN OUTPUT	LUMINAIRE LUMEN OUTPUT	L	B	LIFETIME	COLOUR/ RAL	PART NUMBER
Power LED 220-240 V 50/60 Hz															
LED	12 W	II		65	6000	R		360°	800 lm	316 lm	80	10	50000 h	●	06015696
LED	12 W	II		65	3000	R		360°	720 lm	284 lm	80	10	50000 h	●	06021296



The luminaires are designed to prevent any humidity and condensation inside the luminaire bodies that may occur under particular thermal conditions.



The QUICK versions allow quick installation of the product. They are supplied with lamp assembled, and with WaterStop device. It is therefore not necessary to open the luminaire, but simply connect external power to have a working luminaire.

CRICKET 168+ RAD

